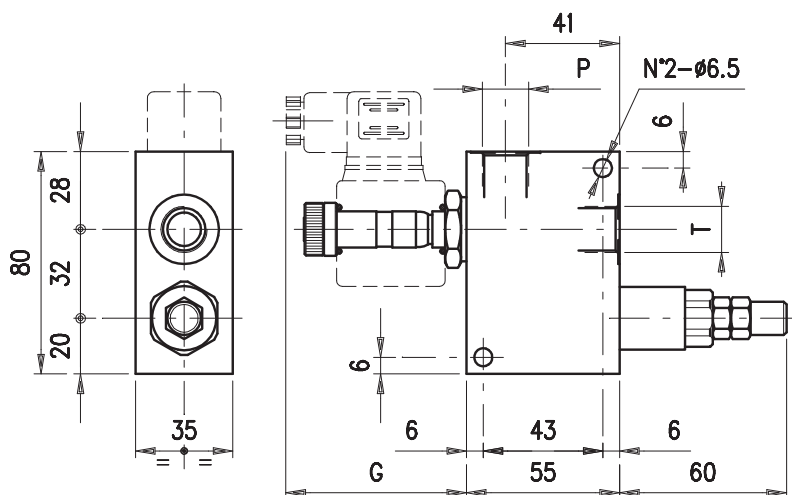


## Rohrleitungsventile

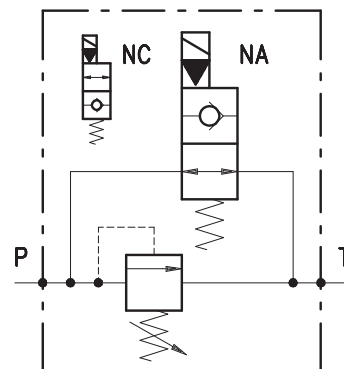
– Druckbegrenzungsventil direktgesteuert  
mit elektrischem Entlastungsventil –



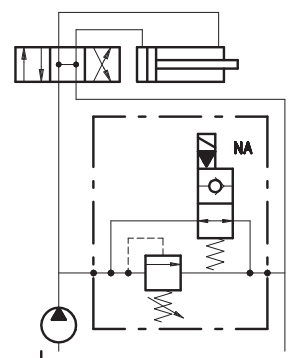
Bestellnr.	Typ	max. Durchfluss <i>l/min</i>	max. Betriebsdruck <i>bar</i>	Gehäuse	Code
230-0080-0560	VMP/VE 14/NA/5.TS.S	20	210	Alu	1116011104
230-0080-0565	VMP/VE 14/NC/5.TS.S	20	210		1116011105
230-0080-0570	VMP/VE 38/NA/5.TS.S	35	210		1116021104
230-0080-0575	VMP/VE 38/NC/5.TS.S	35	210		1116021105



VMP/VE	P	T	G
14	G 1/4	G 1/4	65
38	G 3/8	G 3/8	79



• ASSEMBLY DIAGRAM



• CROSS SECTION

• DESCRIPTION

Pressure relief valve with electric bypass, direct acting.

• OPERATION

Allows oil flow from P to T when pressure in P reaches the setting of the spring. Pick the solenoid UP (for NC types) or DOWN (for NA types) to allow for free oil flow from P into T.

• PERFORMANCE

Maximum flow:

- 20 l/min. for VMP/VE 14
- 35 l/min. for VMP/VE 38

Maximum Pressure:

- 210 bar (aluminium valves)
- 350 bar (steel valves)

Application range with standard springs:

- 5 ÷ 40 bar ( test setting: 30 bar at 5 l/min.)
- 20 ÷ 80 bar ( test setting: 60 bar at 5 l/min.)
- 50 ÷ 220 bar ( test setting: 160 bar at 5 l/min.)
- 180 ÷ 350 bar ( test setting: 250 bar at 5 l/min.)

To perform setting of the valve see the pressure drop/ flow diagram.

Hysteresis: 90% of the valve settings for 1 L. flow capacity per minute.

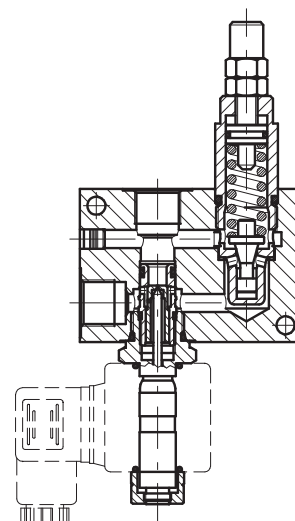
Solenoids:

- VMP/VE 14 (210 bar) BE/... See page Z.2001.100
- VMP/VE 14 (350 bar) and VMP/VE 38 BT/... See page Z.2001.200

Oil leaks from P to T: disregarable.

Working temperature:

- min. -25°C max. 90°C with standard BUNAN gaskets



**RECOMMENDATIONS**

**Fluid:** best use mineral oil with viscosity ranging between 10 and 200 cSt.

**Filter:** see page Z.9000.000.

**Weight:**

- aluminium valves 0.60 kg
- steel valves 1.13 kg

**Cartridge used:**

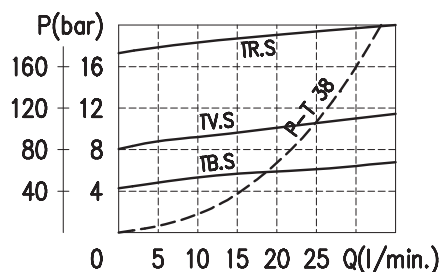
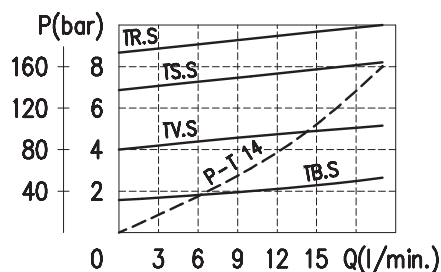
- pressure relief see page 1.1000.102
- solenoid VMP/VE 14 (210 bar) see page 1.1000.100
- solenoid VMP/VE 14 (350 bar) see page 1.1000.250

**Material:** internal components made out of high-grade steel duly treated and fabricated. For more information please ask our technical office.

Variations and modifications of technical features and dimensions are reserved. **OLEOSTAR S.p.A.** also reserves the right to stop production of each and any model listed in the catalogue with no notice.

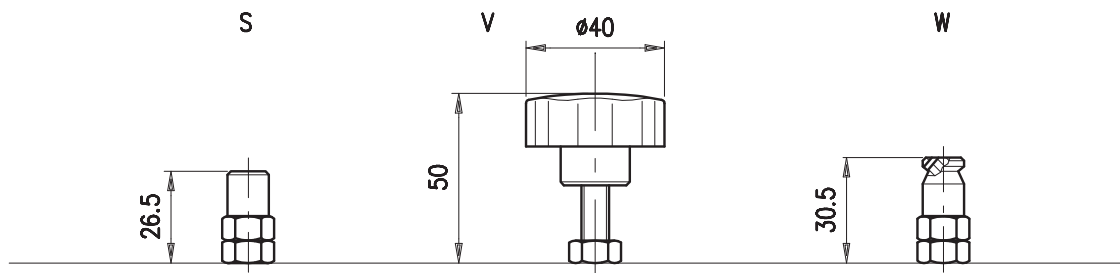
Copyrights on the text contained herein belong to **OLEOSTAR S.p.A.** Partial and full reproductions or copies of this catalogue are forbidden.

**RATING DIAGRAMS**



Oil viscosity 46 cSt

**ADJUSTMENTS**



**CODE NUMBER**

VMP /VE □□ / □□ / □□ . □ / □□

Port size	Assembly scheme	Pressure settings (bar)	Adjustment	Body material
14) 1/4" BSP 38) 3/8" BSP	NA) Normally opened NC) Normally closed	TB) 5+40 TV) 20+80 TS) 50+220 TR) 180+350	S V W	_ Aluminium ac Steel